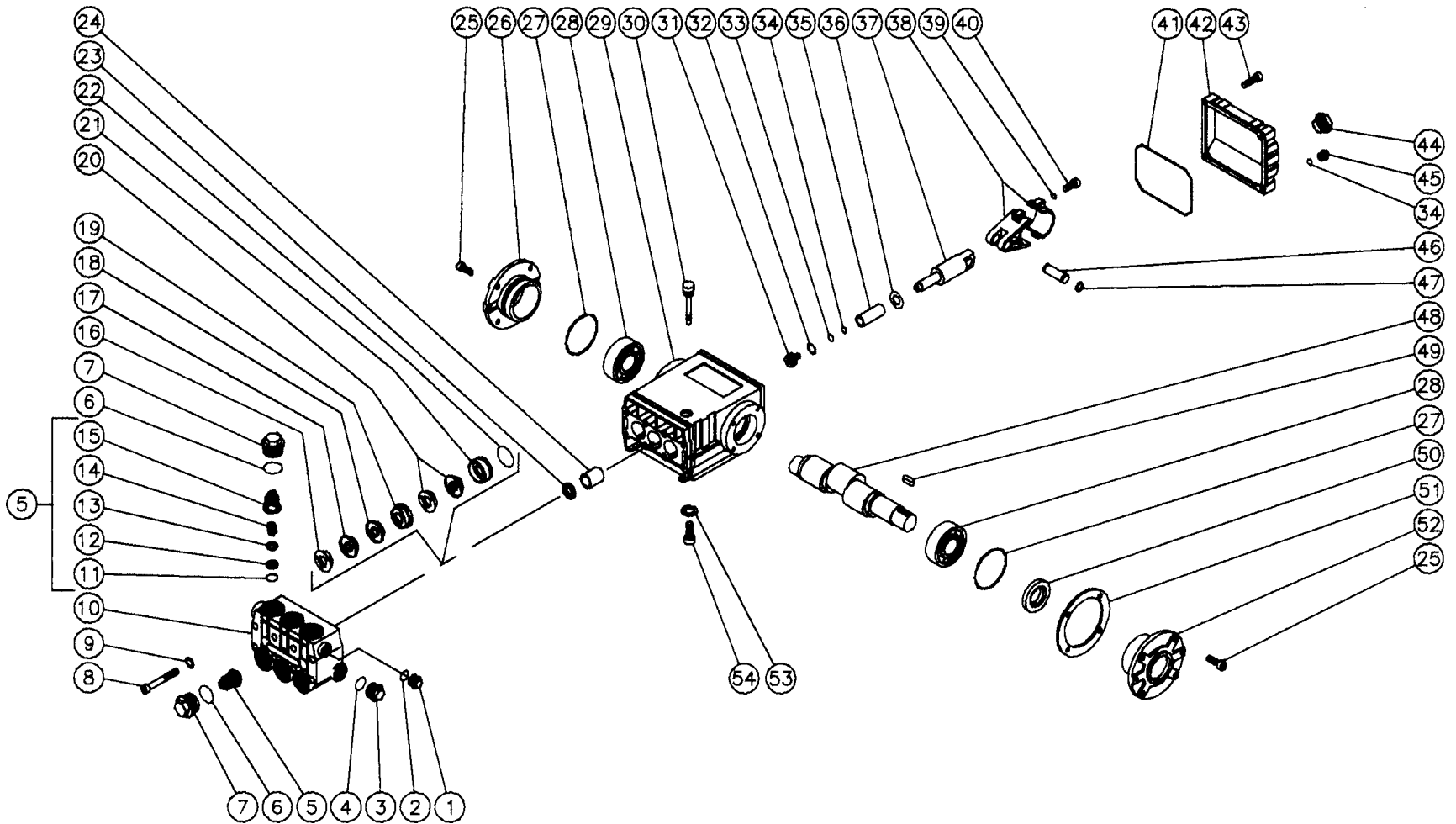


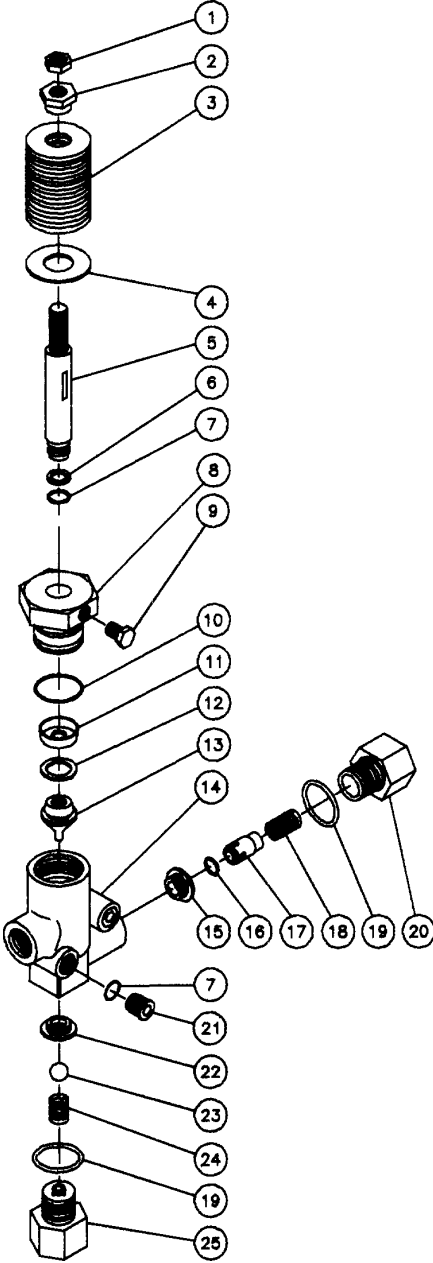
PUMP ASSEMBLY (3-0079)



OMPMP020 / 022796JTR

PUMP ASSEMBLY (3-0079)								
REF. #	DESCRIPTION	PART #	QTY.		REF. #	DESCRIPTION	PART #	QTY.
1	Hex Plug	39-0018	1		30	Oil Dipstick	46-0144	1
2	Washer	28-0600	1		31	Piston Bolt	46-0069	3
3	Hex Plug	39-0019	1		32	Washer	28-0400	3
4	Washer	28-0601	1		33	O-ring	25-0014	4
5	Valve Assy. (11-15) (See 70-0009)	N/A	6		34	Back-up Ring	46-0109	3
6	O-ring	25-0012	6		35	Plunger	46-0052	3
7	Valve Plug	39-0020	6		36	Flinger Washer	46-0146	3
8	Bolt	27-8185	8		37	Piston Rod	46-0054	3
9	Lockwasher	28-0210	8		38	Connecting Rod	46-0051	3
10	Pump Manifold - Brass 20mm	46-0060	1		39	Lockwasher	29-0154	6
11	O-ring (See 70-0009)	N/A Sep.	6		40	Bolt	27-8435	6
12	Valve Seat (See 70-0009)	N/A Sep.	6		41	O-ring Cover -Old Style	25-0079	1
13	Valve Plate (See 70-0009)	N/A Sep.	6		--	O-ring Cover - New Style	25-0339	1
14	Valve Spring (See 70-0009)	N/A Sep.	6		42	Crankcase Cover - Old Style	46-0065	1
15	Valve Cage (See 70-0009)	N/A Sep.	6		--	Crankcase Cover - New Style	46-0295	1
16	Head Ring (See 852-0122)	N/A Sep.	6		43	Bolt	27-8404	5
17	Head Ring (See 852-0122)	N/A Sep.	6		44	Oil Level Indicator	46-0114	1
18	Stop Ring Packing (See 852-0122)	N/A Sep.	6		45	Hex Plug	39-0017	1
19	Intermediate Ring	46-0659	3		46	Connecting Rod Pin	43-0032	3
20	Seal (See 852-0122)	N/A Sep.	3		47	Retaining ring	46-0103	6
21	Seal Retainer	46-0057	3		48	Crankshaft	46-0050	1
22	O-ring	25-0015	3		49	Key	43-0048	1
23	Oil Seal	26-0047	3		50	Oil Seal	26-0049	1
24	Bushing	9-0029	3		51	Shim	46-0113	2
25	Bolt	27-8431	8		52	Crankcase Cover-Open	46-0296	1
26	Crankcase Cover-Closed	46-0336	1		53	Lockwasher	29-0055	4
27	O-ring	25-0013	2		54	Bolt	27-8471	4
28	Roller Bearing	48-0012	2			Valve Kit (6 each of 11-15)	70-0009	
29	Crankcase	46-0047	1			Packing Kit (3 each of 16, 17, 18, 20, 22)	852-0122	

UNLOADER ASSEMBLY (8-0032)



OMGEN074 / 083094BAR

UNLOADER ASSEMBLY (8-0032)			
REF.#	DESCRIPTION	PART #	QTY.
1	Locknut	30-3058	1
2	Adjusting Nut	8-0089	1
3	Spring Washers	8-0009	15
4	Washer	28-0250	1
5	Valve Stem	8-0037	1
6	Back-up Ring	8-0038	1
7	O-ring	25-0009	5
8	Valve Cap	8-0036	1
9	Set Screw	8-0084	1
10	O-ring	25-0008	1
11	Cup	8-0034	1
12	Back-up Ring	8-0040	1
13	Piston	8-0039	1
14	Valve Body	8-0164	1
15	Outlet Seat	8-0006	1
16	O-ring	25-0011	1
17	Outlet Valve	8-0004	1
18	Spring	49-0016	1
19	O-ring	25-0010	2
20	Outlet Retainer	8-0003	1
21	Brass Plug	8-0011	4
22	Valve Seat	8-0005	1
23	Brass Ball	8-0041	1
24	Spring	49-0015	1
25	Inlet Retainer	8-0165	1
	Unloader Repair Kit (Inc. 6, 7, 10-12, 16 and 19)	70-0044	